



Installation and Operation Instructions



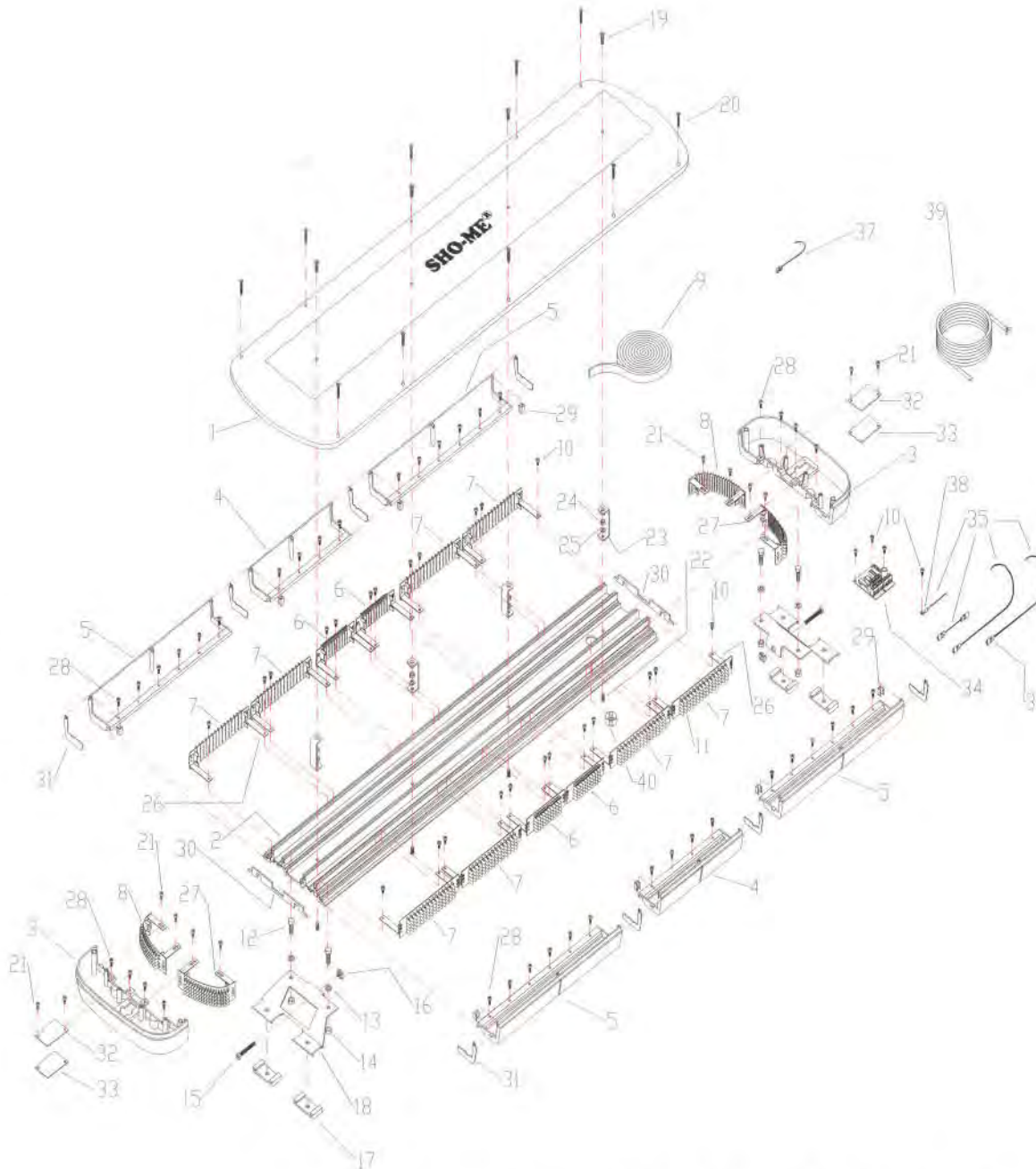
MODEL NO. 32.LED49 49" LED Light Bar

!! IMPORTANT !!
Read all instructions and warnings before beginning installation.



PRODUCTS COMPANY • 804 East Hwy. 248 • Cassville, MO 65625
U.S. and Canada Toll Free Numbers • Phone: 800-641-4098 FAX: 800-526-1240
E-mail: sales@able2products.com WEB: www.able2products.com

Parts List for the 32.LED49.C00 LED Light Bar



ITEM	MODEL NO.	DESCRIPTION	QTY
1	90.6119.000	LED Lightbar Cover	1
2	70.622-2T0000	2000 Main Extrusion Thin (42 ³ / ₁₆ "	1
3	70.41C-L2EL	Clear Lens 2000E End Lower	2
4	70.41C-L2MLS	Clear Lens 2000 Lower Short	2
5	70.41C-L2MLL	Clear Lens 2000 Lower Long	4
6	90.3730.000	PC Board Short LED Lightbar (Red/Amber)	-
-	90.3729.000	PC Board Short LED Lightbar (Blue)	4
7	90.3732.000	PC Board Long LED Lightbar (Red/Amber)	-
-	90.3731.000	PC Board Long LED Lightbar (Blue)	8
8	90.3830.000	PC Board/Lightbar Corner LED (Red/Amber)	-
-	90.3828.000	PC Board/Lightbar Corner LED (Blue)	4
9	90.6039.000	1/8" X 3/4" Black Foam Adhesive (144")	1
10	70.024-122	MM4X8MM Phil Pan Head Bolt SS	28
11	90.3930 (R/A)00	Red/Amber LED 30 Degree	-
-	90.3910.BOO	Blue LED 30 Degree	912
12	70.024-123	M8-1.25X20 Hex Hd Bolt 18-8 SS	4
13	255-126	Short Mounting Bolt Washer	4
14	255.NUT	Nut 8MM Hex Std-Nut	4
15	026.339	Long Mounting Bolt	2
16	70.086-030	Square Nut Clip	2
17	70.423-202	Rubber Boot	4
18	70.632-010	Alu Mounting Bracket	2
19	90.4079.BLK	1/4 X 20 X 3/4 Phil Screw Bl Ox	4
20	90.4060.SSBO	10-24X1 Phil FI HD M/S SS	10
21	90.1002.000	#8 X 1/2 812	12
22	90.4048.BLK	1/4 - 20 X 1/2 PEM S-C Stud Bl Zin	4
23	90.5000.000	Alu Brkt for LT Bar Lid	4
24	90.4575.000	1/4" X 20 Thn Hex Nuts Zinc Pl	4
25	90.4540.000	1/4" Lockwasher Internal Tooth	4
26	90.4202.000	Alum Brkt for Linear LED/LBar	24
27	90.4201.000	Alum Brkt for LED in Lightbar	4
28	70.024-220	M4 X 10P/P MT S/S	40
29	70.060-011	Spring Clip	8
30	70.432-001	2000 Extrusion Gasket	2
31	70.430-2KL	2000 Lens Joining Tape Set	8
32	70.620-202	Cable Cover (no hole)	2
33	70.432-002	2000 Cable Cover Gasket	2
34	95.3728.000	8 Output LED Flasher Board	1
35	41.0181.010BLK	Black 18 GA RVI Wire (to length)	-
-	41.0181.010YEL	Yellow 18 GA RVI Wire (to length)	-
-	41.0181.010RED	Red 18 GA RVI Wire (to length)	-
36	83.0258.000	Nylon 18-14 GA Female Full Ins	40
37	61.0651.000	7" Cable Ties	8
38	90.3970.000	Circle Terminal	1
39	44.189121101	Power Supply Cable (15')	1
40	90.6880.000	Gromet	1

CONTACT FACTORY FOR OTHER OPTIONS INCLUDING "CHAMELEON LIGHTS"

Introduction

Thank you for purchasing your **SHO-ME**® LED Light Bar. Please read all installation instructions and warnings **before** attempting installation. Proper installation of the light bar is vital to its performance.

The use of this or any warning device does not ensure that all drivers can or will observe or react to an emergency warning signal. **Never take the right-of-way for granted.** It is the driver's responsibility to be sure they can proceed safely before entering an intersection, driving against traffic, or responding at a high rate of speed.

!! WARNING !!

This equipment is intended for authorized emergency personnel only. It is the user's responsibility to understand and obey all laws regarding emergency warning devices. The user should check all applicable city, state and federal laws and regulations.

General Information:

BEFORE YOU START the installation, carefully inspect the light bar for any damage during transit. Report any damage to the carrier. (If damaged in transit, keep shipping carton for examination.)

Your **SHO-ME**® Light Bar is designed to operate on +12v. If your vehicle operates on any other voltage, consult the factory for a custom designed light bar. It is advisable to test the light bar before installation to be sure all functions work as desired.

Do not install this product or route any wires in the deployment area of your air bag. Equipment mounted or located in the air bag deployment area will damage or reduce the effectiveness of the air bag, or become a projectile that could cause serious personal injury or death. Refer to your vehicle owners manual for the air bag deployment area.

The User/Installer assumes full responsibility to determine proper mounting location, based on providing ultimate safety to all passengers inside the vehicle.

Use only soap and water to clean the outer lens. Use of other chemicals could result in premature lens cracking (crazing) and discoloration. Lenses in this condition have significantly reduced effectiveness. Inspect and operate this product regularly to confirm its proper operation and mounting condition. Do not use a pressure washer to clean this product.

Installation Instructions

There are two ways to mount your new **SHO-ME**® light bar. Permanent mount with door jam bracket (or) Permanent mount w/o door jam bracket. **DUE TO THE DIFFERENCES IN VEHICLES , IT IS THE SOLE RESPONSIBILITY OF THE USER TO DETERMINE MOUNTING METHODS AND HARDWARE.**

(1) Permanent mount using the door jam bracket. (Diagram "A") This mounting method requires a "custom" door jam bracket , using screws provided. (Contact factory for correct bracket.)

a. Slide bolts (provided with foot brackets) into bottom of light bar. Attach foot brackets to bottom of light bar. (Leave nuts loose to allow for sliding bracket where needed.)

b. Center light bar on vehicle. Slide the foot brackets so there is approximately 1/4" clearance between the top of the vehicle and the bottom of the light bar at the center. The closer to the end of the light bar you slide the bracket, the lower the light bar will set on your vehicle. Your light bar should set as low as possible for least wind resistance, but high enough not to vibrate on the top of the vehicle.

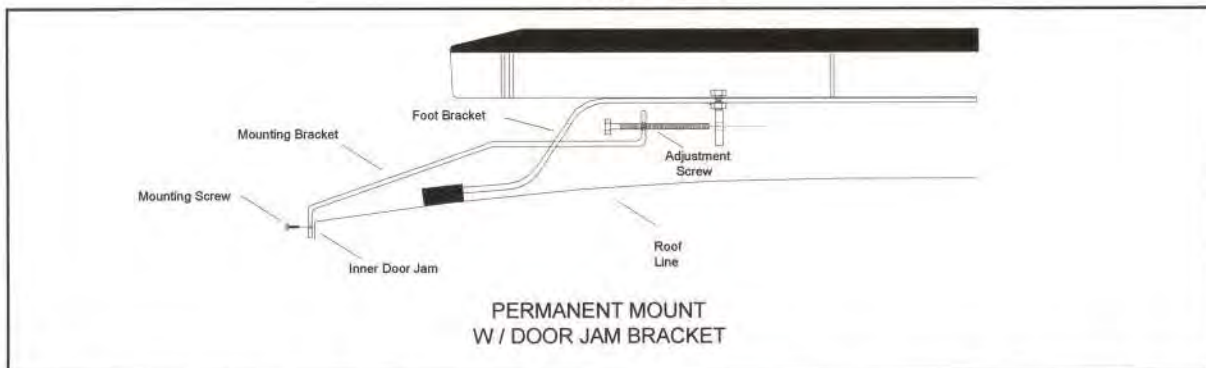
c. Remove Adjustment Screw (see diagram "A"). Feed mounting bracket through hole in foot bracket. Attach with adjustment screw. (Leave loose to allow for adjustment of bracket.)

d. Align mounting bracket with door jam and attach with screws provided. Tighten adjustment screw to secure light bar to vehicle. Tighten all mounting screws and bolts.

e. Wire according to wiring diagram.

WARNING: If mounting this product requires drilling holes, the installer **MUST** be sure that no vehicle components or other vital parts could be damaged by the drilling process. Check both sides of the mounting surface before drilling begins. Also de-burr any holes and remove any metal shards or remnants. Install grommets into all wire passage holes.

Diagram "A"



(2) **Permanent mount through the top of vehicle without door jam bracket.** (Diagram "B" below) This method requires removal of headliner and drilling down through top of vehicle.

a. Slide bolts (provided with foot brackets) into bottom of light bar. Attach foot brackets to bottom of the light bar. (Leave nuts loose to allow for sliding bracket where needed.) Remove adjustment screw, it will not be required for your installation.

b. Center the light bar on the vehicle. Slide the foot brackets so there is approximately 1/4" clearance between the top of the vehicle and the bottom of the light bar at the center. The closer to the end of the light bar you slide the bracket, the lower the light bar will set on your vehicle. Your light bar should set as low as possible for least wind resistance, and high enough not to vibrate on top of the vehicle.

c. Mark vehicle roof, using foot brackets for pattern. Remove light bar from vehicle.

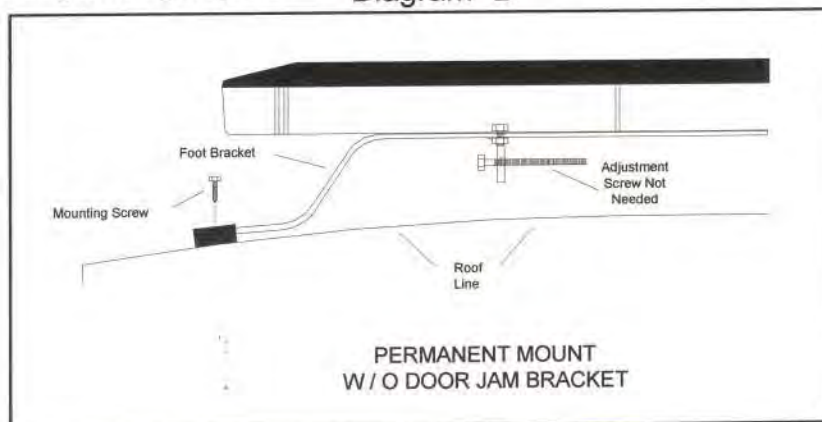
d. Remove headliner (if required), making sure there is plenty of clearance to drill mounting holes.

e. Drill holes marked earlier.

f. Attach light bar to vehicle using bolts, washers, lock washers, or lock nuts. (not included)

g. Wire according to wiring diagram.

Diagram "B"



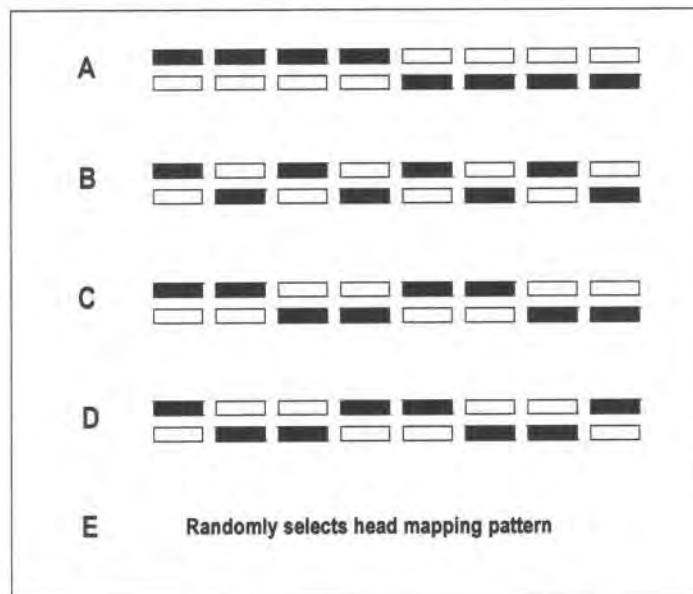
LED FLASHER INSTRUCTIONS:

Your **SHO-ME**® LED Light Bar is equipped with a 95.3278 selectable LED Flasher. When the flasher is shipped from Able 2 Products Co., it is set in the **Automatic Random Flash/Random Head Mapping Pattern**. In this mode, it will randomly select both the Flash Pattern **and** the Head Mapping pattern, changing both every few seconds. If desired, change Flash and Head Mapping patterns using directions below.

AVAILABLE FLASH PATTERNS

- | | | | |
|---|----------------------------------|---|---------------------------------|
| 1 | Alternating Quad Flash | 5 | Alternating Single Flash - Mega |
| 2 | Alternating Single Flash | 6 | Sequence |
| 3 | Alternating Single Flash - Super | 7 | Automatic Random Pattern (1-6) |
| 4 | Alternating Double Flash | | |

AVAILABLE HEAD MAPPING PATTERNS



■ = ON

□ = OFF

To change flash patterns, apply +12v to INPUT #3 momentarily until flashing stops, then release to go to the next pattern.

To change Head Mapping, apply +12v to INPUT #4 momentarily until flashing stops, then release to go to the next Head Mapping pattern.



PRODUCTS COMPANY • 804 East Hwy. 248 • Cassville, MO 65625
U.S. and Canada Toll Free Numbers • Phone: 800-641-4098 FAX: 800-526-1240
E-mail: sales@able2products.com WEB: www.able2products.com